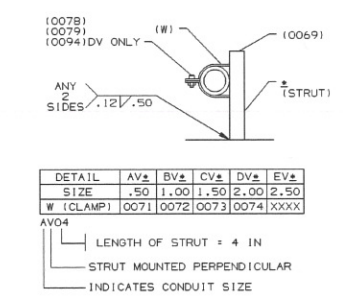
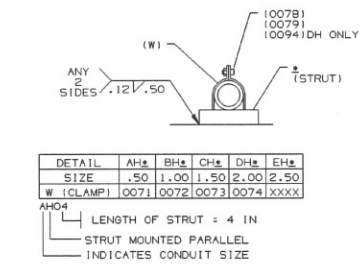
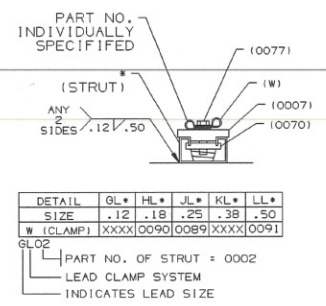


- NOTES:
1. STRUCTURAL WELDS ARE PER PBA-AG1, FIGURE PER APPENDIX III, FILLER METAL COLUMN (A) PER APPENDIX II.
 2. SEALING INSTRUCTIONS ARE PER ML ITEM 0475.
 3. CENTER CAPILLARIES/CONDUIT AND OR LEAD/S IN CLEARANCE HOLE/S THEN FILL AROUND WITH RED HIGH TEMPERATURE R.T.V. 35327. ALL VISIBLE R.T.V. TO BE EVEN WITH SURFACE AND SMOOTH.
 4. SECURE ALL STAINLESS STEEL NAMEPLATES USING DRIVE SCREWS, N530P00706, IN APPROXIMATE LOCATION SHOWN USING DETAIL A-3.
 5. MAXIMUM DISTANCE BETWEEN SUPPORTS AND DETECTION DEVICES TO BE 18.00 INCHES ON FLEXIBLE LEADS AND CAPILLARIES. TIGHTEN CLAMPS SNUGLY, BUT DO NOT OVER TIGHTEN.
 6. SEE CABLE BLOCK DIAGRAM (ML ITEM 0463) FOR INTERCONNECTING CABLES TO THESE JUNCTION BOXES.
 7. LEAVE SUFFICIENT SLACK IN LEAD TO PERMIT SPARK PLUG TO RETRACT DURING OPERATION.
 8. SUFFICIENT QUANTITIES OF CONDUIT, SUPPORTS AND MISC... FITTINGS HAVE BEEN PROVIDED ON THE BILL OF MATERIAL TO ROUTE AND CONNECT RUNS AS SHOWN PER SCHEMATIC. ACTUAL ROUTING TO BE AT INSTALLERS DISCRETION PER 287A1300.
 9. CUT-TO-LENGTH QUANTITIES OF UNISTRUT HAVE BEEN PROVIDED ON THE BILL OF MATERIAL, AS WELL AS RANDOM LENGTHS, FOR ANY GANG MOUNTING OF CONDUIT.
 10. DIMENSIONS SHOWN ARE APPROXIMATE UNLESS OTHERWISE SPECIFIED.
 11. PART 0025 (QTY. 5) - BREATHER DRAINS SUPPLIED IN BOM FOR USE AS LOW POINT DRAINS WHERE NEEDED.



SUPPORT DETAILS

4	INSTR. CND SEG	356A1909
3	WELDING-GENL SPEC	PBA-AG1
2	APLD PRAC. CND	287A1300
1	APLD PRAC. GENL MACH	34BA9200
IT	NOMENCLATURE	IDENT
LIST OF COMPLEMENTARY DOCUMENTS		
REV	REV STATUS	
7	6	5
4	3	2
1		

BOM ISSUED

SIGNATURES	DATE
DRAWN DON ADAMS	01-02-12
CHAND STEVE STEWART	01-02-13
EMERS R.A. CARDIN	01-02-13
TRIMED DON ADAMS	01-02-13
DRAWN DON ADAMS	01-02-13

UNLESS OTHERWISE SPECIFIED

DIMENSIONS ARE IN INCHES

TOLERANCES UNLESS SPECIFIED

2 PL DECIMALS ±

3 PL DECIMALS ±

ANGLES ±

FRACTIONS ±

APPLIED PRACTICES 34BA9200

GE Power Generation

GENERAL ELECTRIC COMPANY

GE Power Generation

CONDUIT ARR, FIELD WIRING

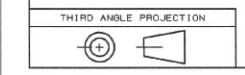
FIRST MADE FOR ML-7A1PEA191-1 1105

SIZE CASE CODE

117E5647

SCALE NONE

SHEET 1



DT-1N

8

7

6

5

4

3

2

1

SIZE		117E5647	2	1
REV		DESCRIPTION		DATE
REV		DESCRIPTION		DATE

REVISE ON CAD ONLY
UG PART: 6R0591-1105
(SPEC: 117E5647)

H

G

F

E

D

C

B

A

H

G

F

E

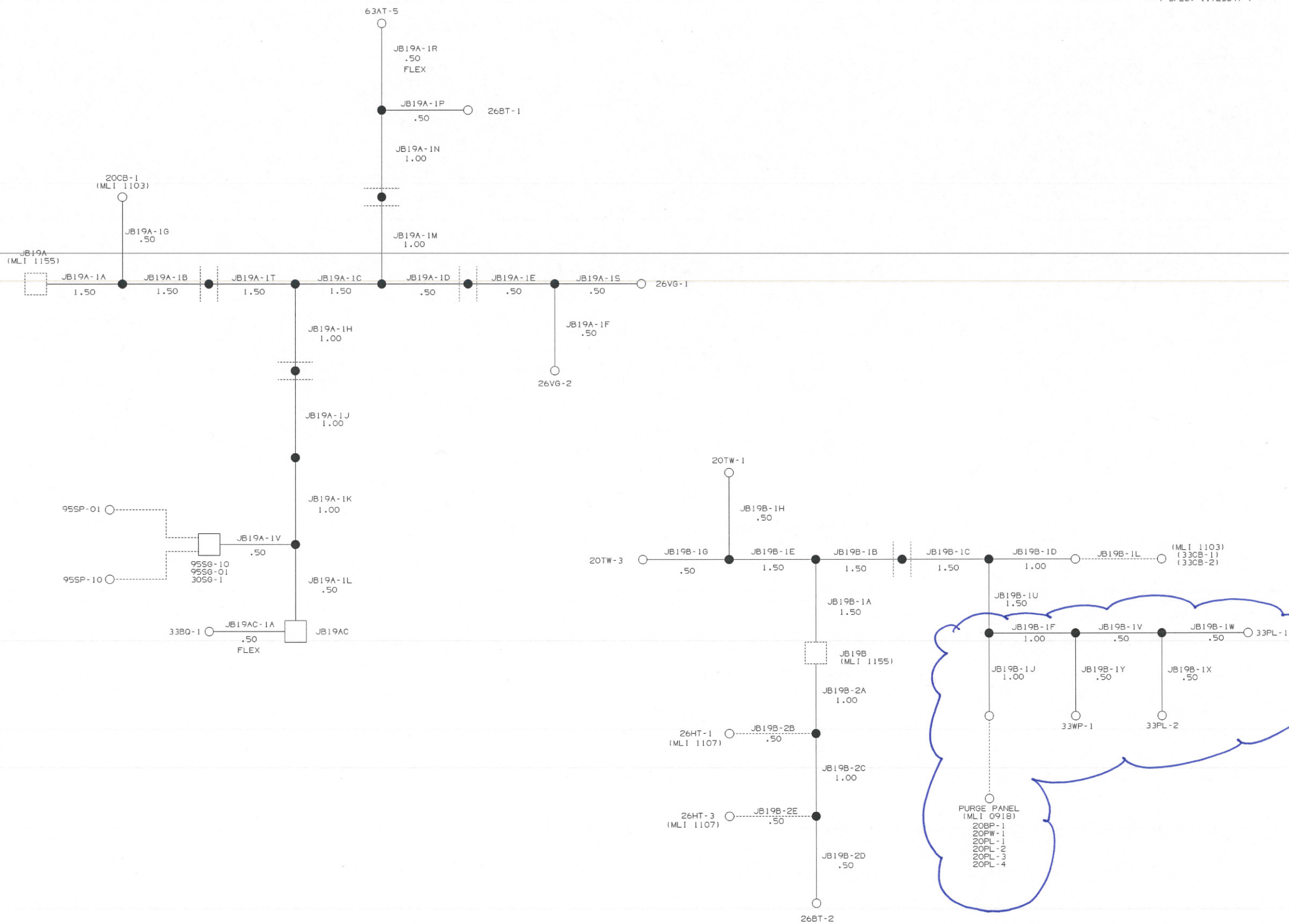
D

C

E

2

1

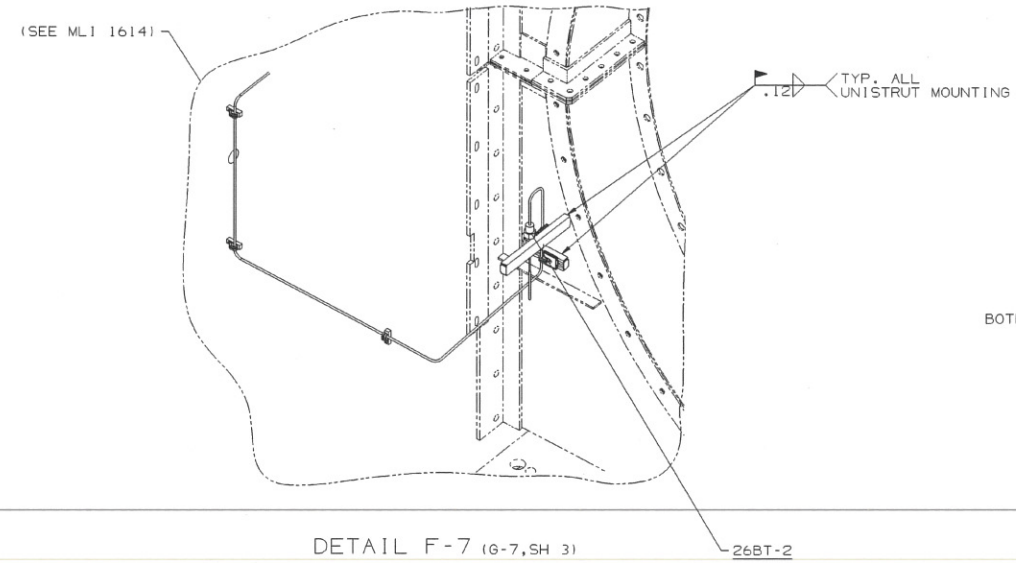


REV		DESCRIPTION		DATE
REV		DESCRIPTION		DATE

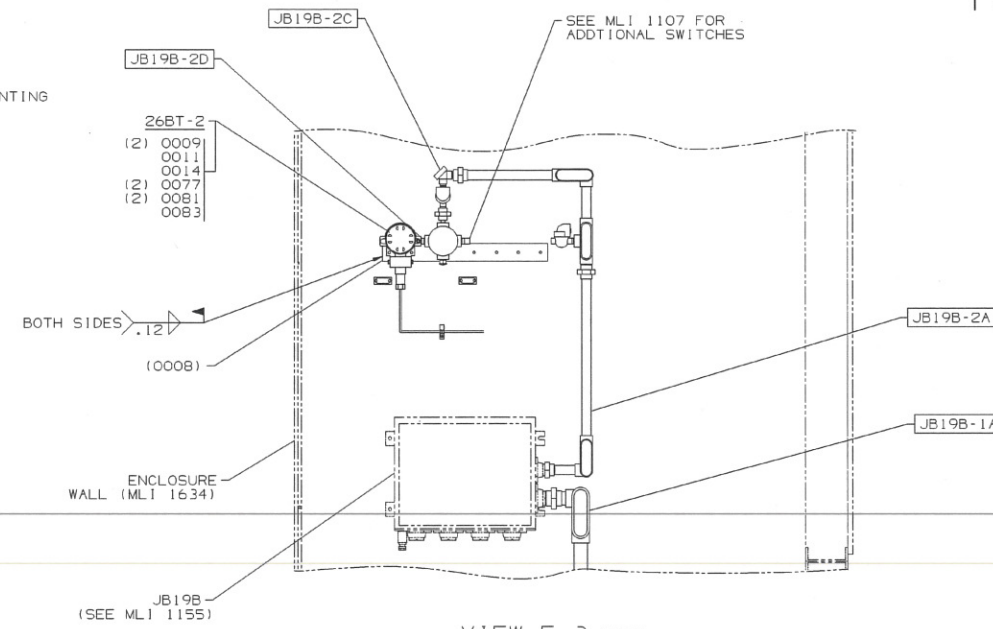
117E5647

REVISIONS			
REV	DESCRIPTION	DATE	APPROVED

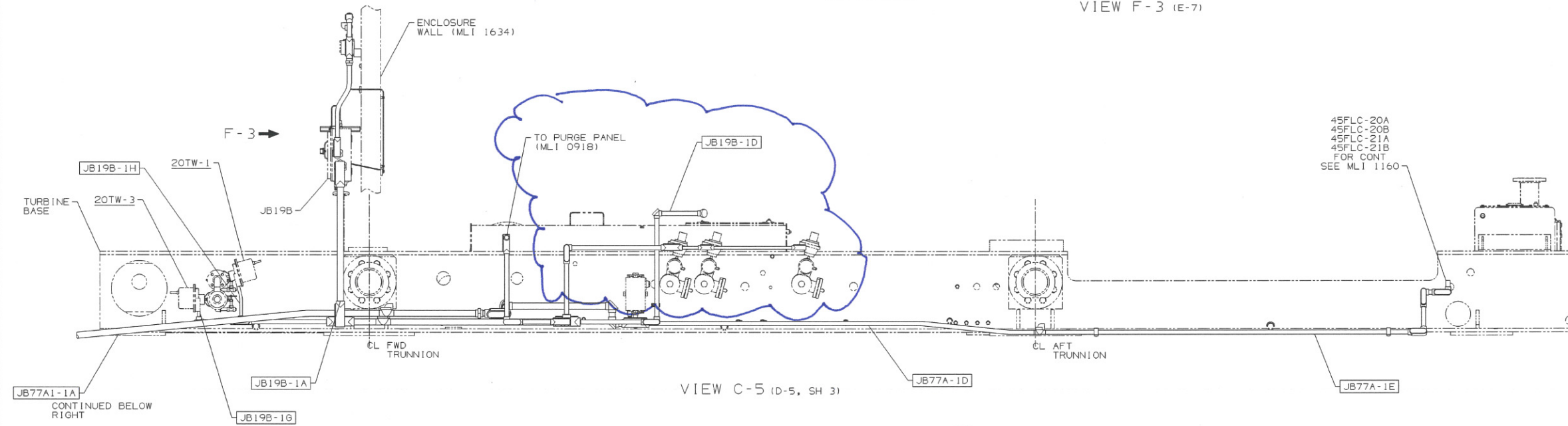
REVISE ON CAD ONLY
UG PART: GR0591-1105
(SPEC: 117E5647)



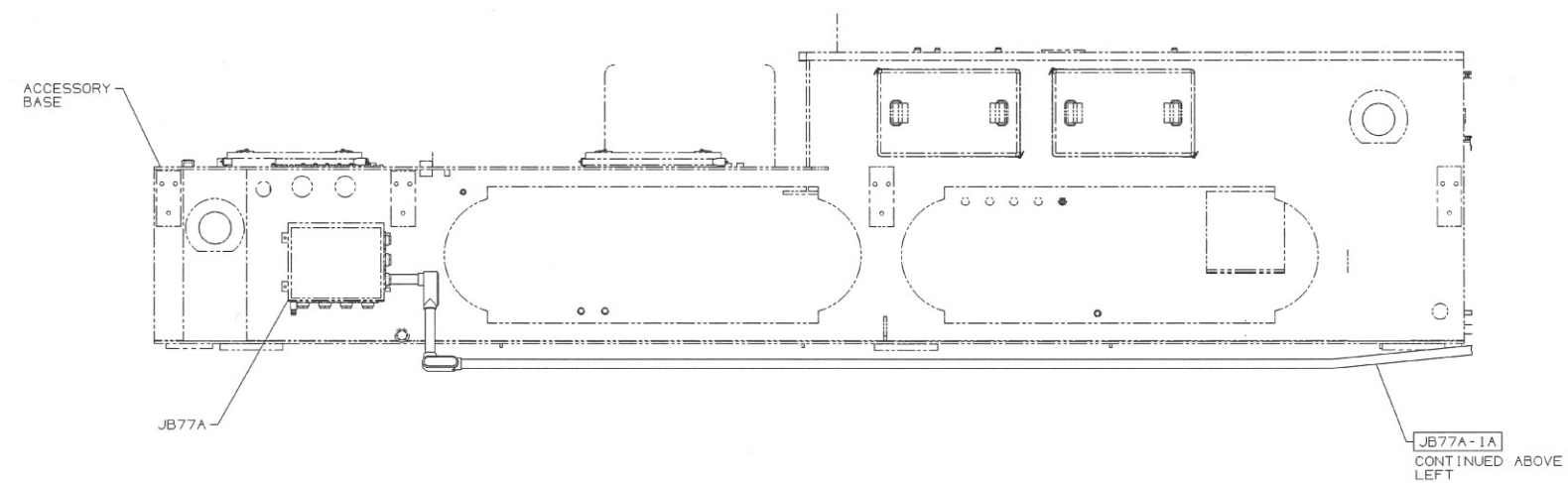
DETAIL F-7 (G-7, SH 3)



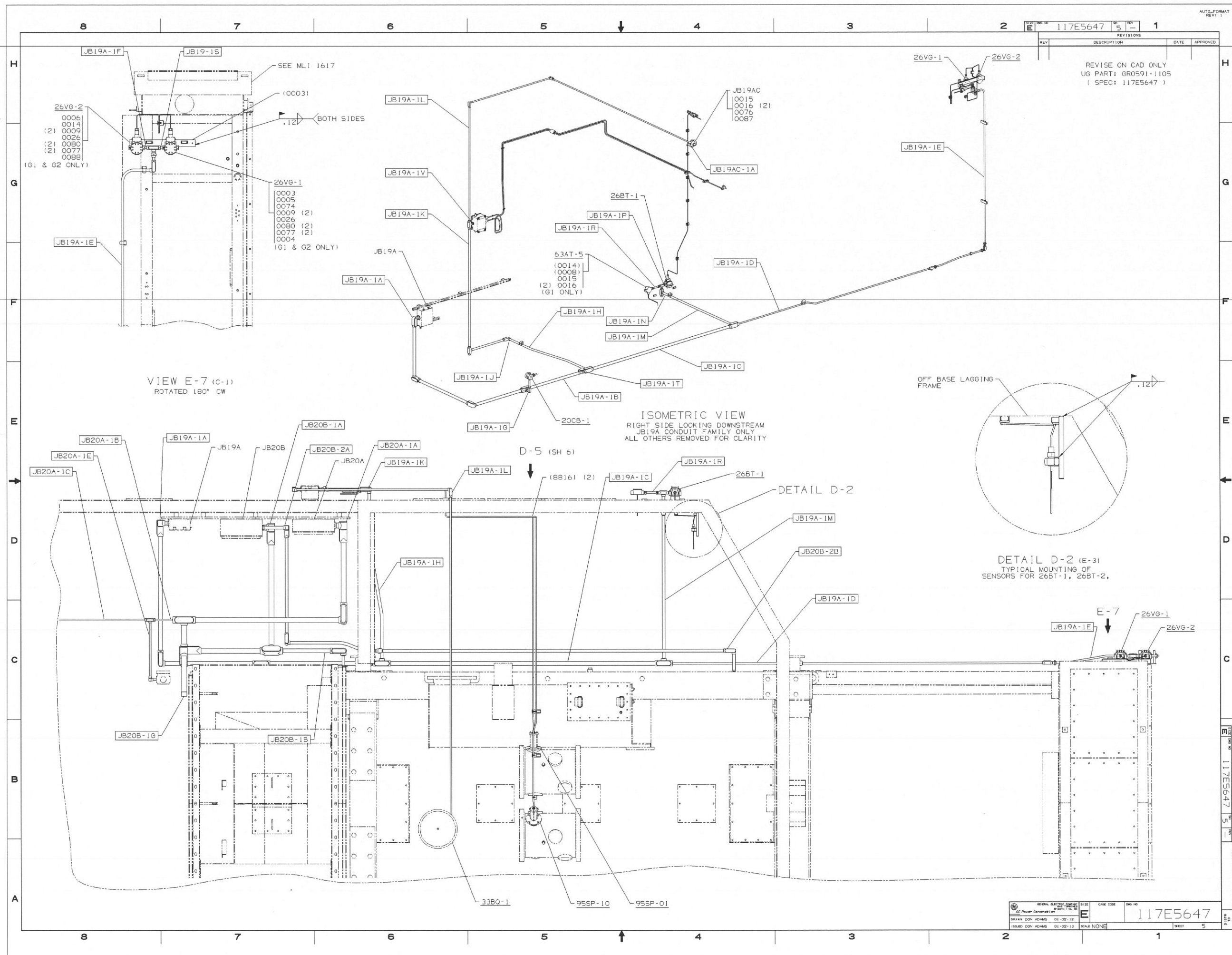
VIEW F-3 (E-7)



VIEW C-5 (D-5, SH 3)

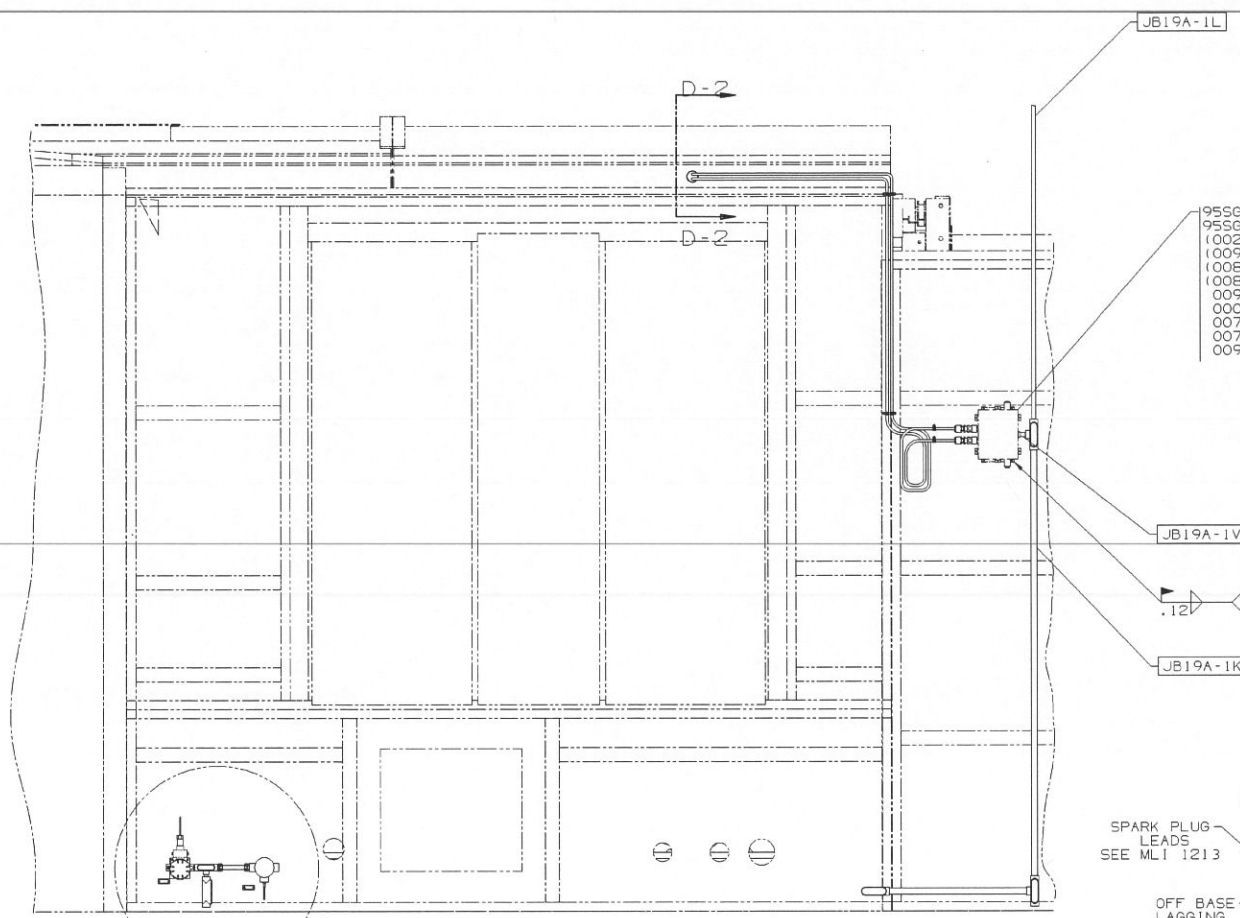


JB77A-1A
CONTINUED ABOVE
LEFT



REV	DESCRIPTION	DATE	APPROVED

REVISE ON CAD ONLY
UG PART: GR0591-1105
(SPEC: 117E5647)

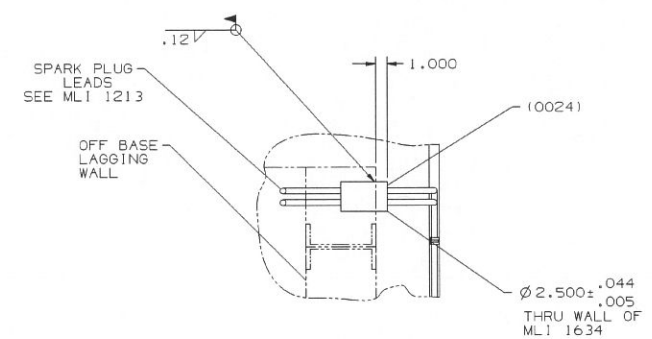


- 955G-01
- 955G-10
- (0024)
- (0092) (4)
- (0081) (4)
- (0086) (4)
- 0091 (28)
- 0007 (28)
- 0070 (28)
- 0077 (28)
- 0093

JB19A-1V

.12 4 PLACES

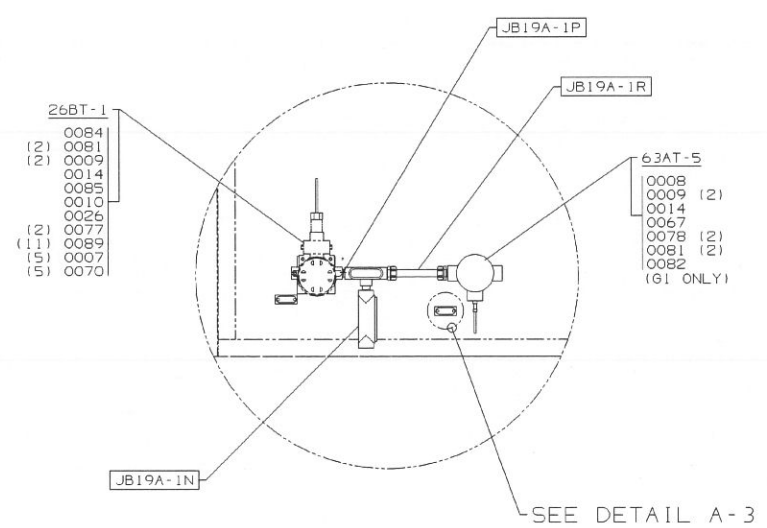
JB19A-1K



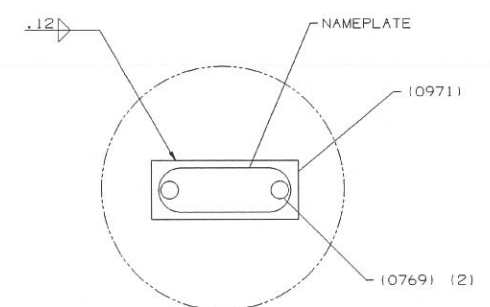
SECTION D-2 (6-5)

VIEW D-5 (E-5, SH 5)
ROTATED 180° CW

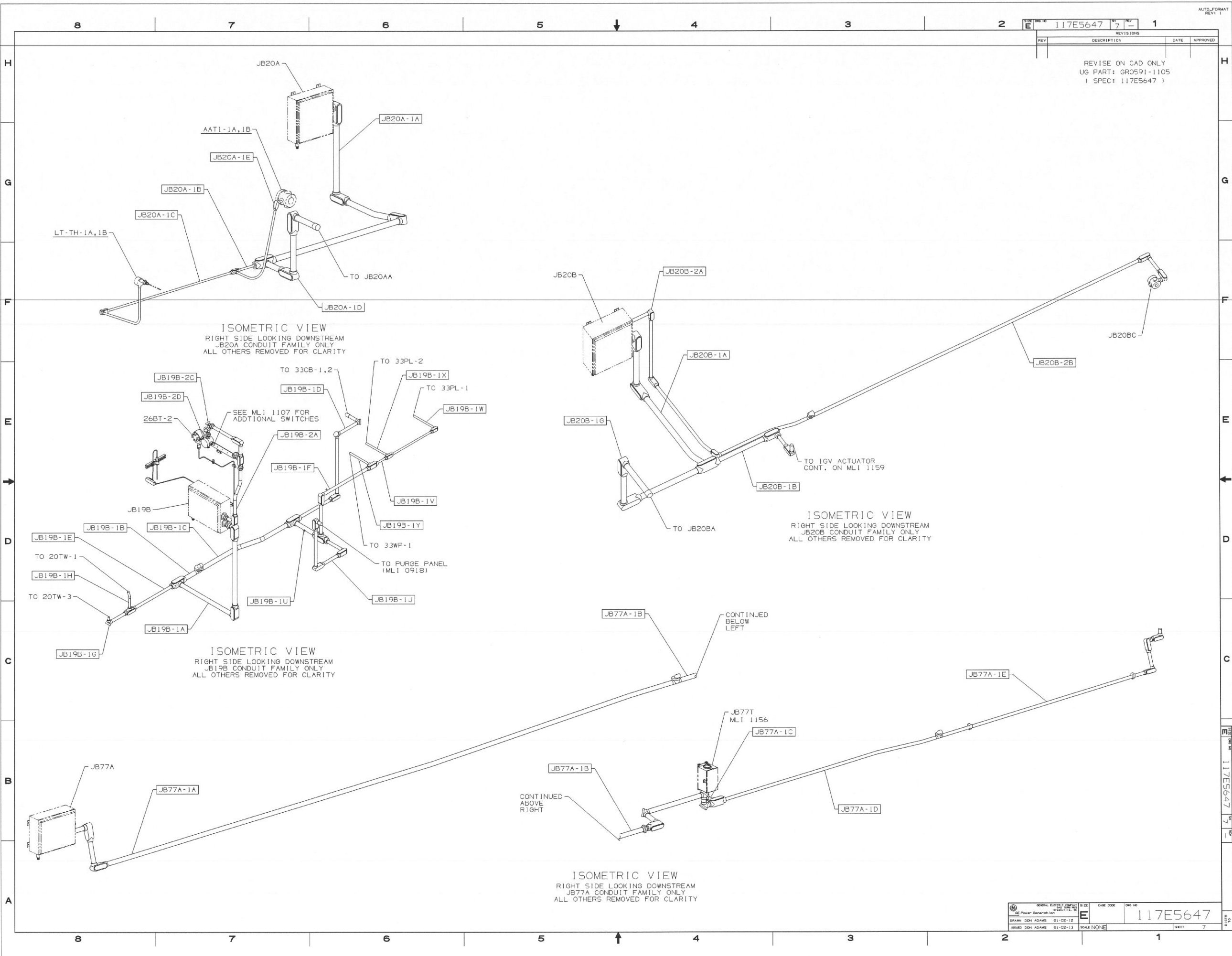
DETAIL A-7



DETAIL A-7 (D-6)



DETAIL A-3 (B-7)



SIZE (DWG NO)		117E5647	7	1
REV		DESCRIPTION		DATE
				APPROVED

REVISE ON CAD ONLY
UG PART: GR0591-1105
(SPEC: 117E5647)

ORIGINAL ELECTRIC COMPANY		DATE CODE	DWG NO
GE Power Generation			117E5647
DRAWN: DON ADAMS 01-02-12		SCALE: NONE	SHEET 7
ISSUED: DON ADAMS 01-02-13			